

# Canon

Andante Sostenuto  $\text{♩} = 72$

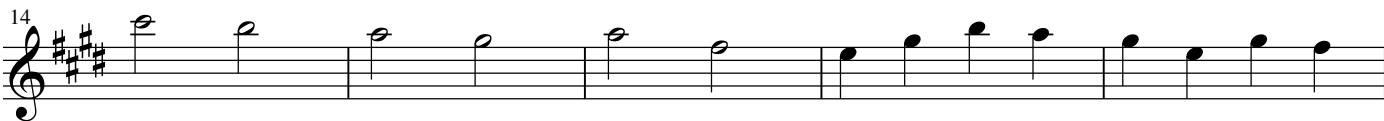
Johann Pachelbel  
arr. T. Hirakoso



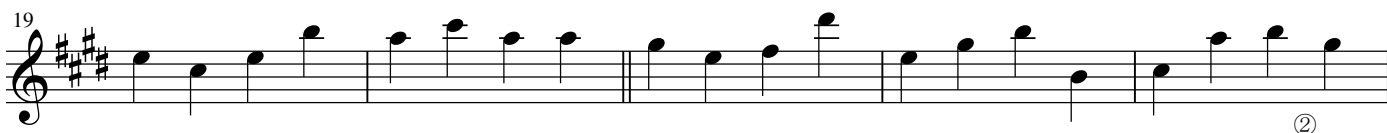
**A**



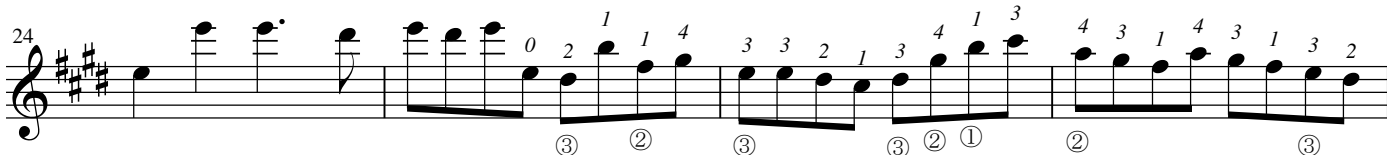
**B**



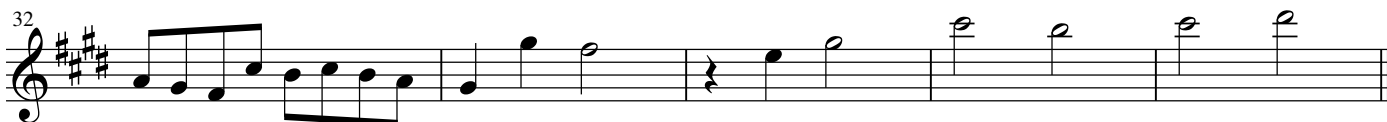
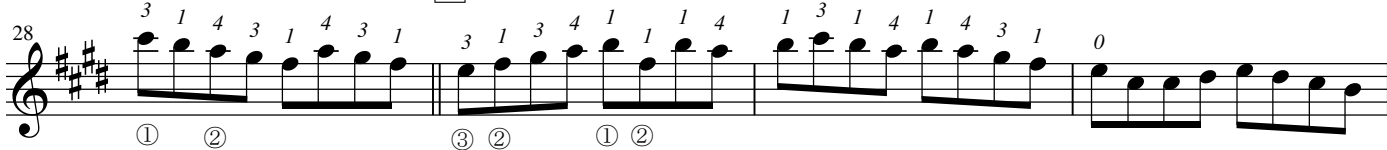
**C**



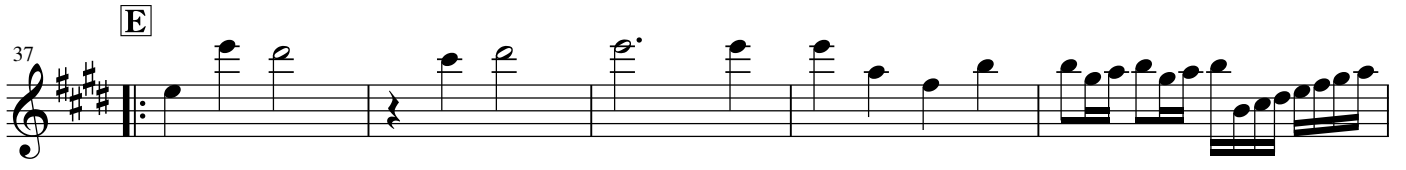
VII - - -



**D**

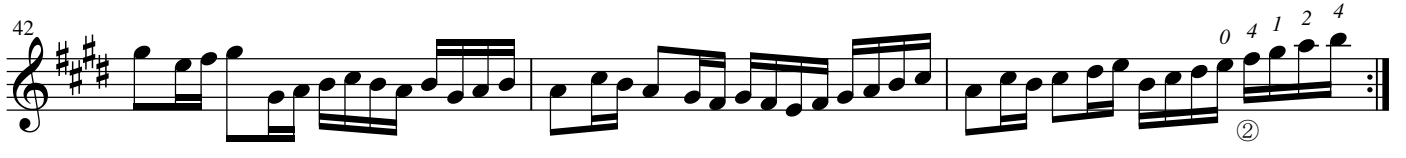


37 **E**



Musical staff 37-41, key signature of three sharps (F#, C#, G#), starting with a double bar line and repeat sign. The staff contains a sequence of notes and rests. Measure 39 features a dotted quarter note, and measure 41 ends with a double bar line and repeat sign.

42



Musical staff 42-44, continuing the key signature of three sharps. Measure 42 begins with a double bar line and repeat sign. The staff contains eighth and sixteenth notes. Measure 44 includes a double bar line and repeat sign, with a circled '2' below and a fingering sequence '0 4 1 2 4' above the final notes.

45 **F**



Musical staff 45-49, key signature of three sharps. Measure 45 starts with a double bar line and repeat sign. The staff contains a sequence of notes, including a dotted quarter note in measure 47. Measure 49 ends with a double bar line and repeat sign.

50 **G**



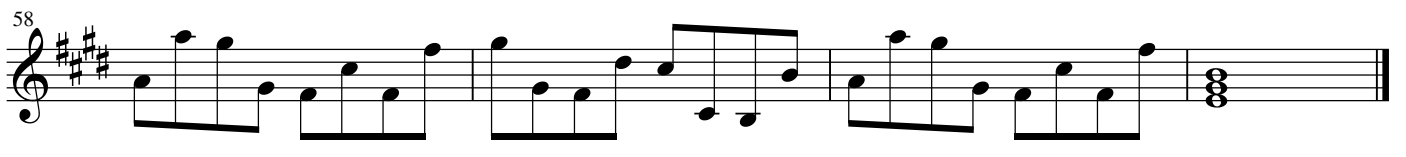
Musical staff 50-53, key signature of three sharps. Measure 50 begins with a double bar line and repeat sign. The staff contains a sequence of notes. Measure 53 ends with a double bar line and repeat sign.

54



Musical staff 54-57, key signature of three sharps. Measure 54 starts with a double bar line and repeat sign. The staff contains a sequence of notes. Measure 57 ends with a double bar line and repeat sign.

58



Musical staff 58-61, key signature of three sharps. Measure 58 begins with a double bar line and repeat sign. The staff contains a sequence of notes. Measure 61 ends with a double bar line and repeat sign.