

Those Were the Days 長い道

日本では「悲しき天使」の曲名で知られた曲です

Boris Fomin
arr. T. Hirakoso

Allegretto

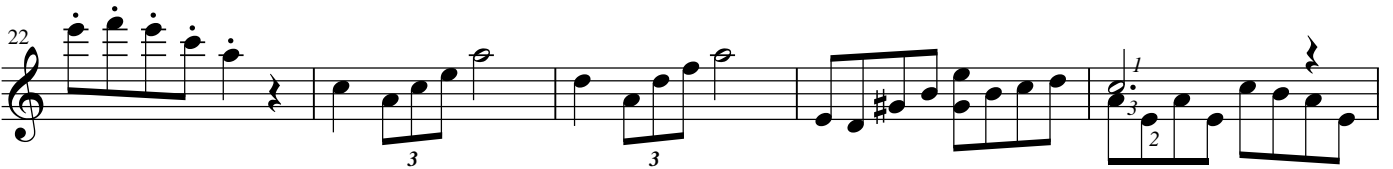
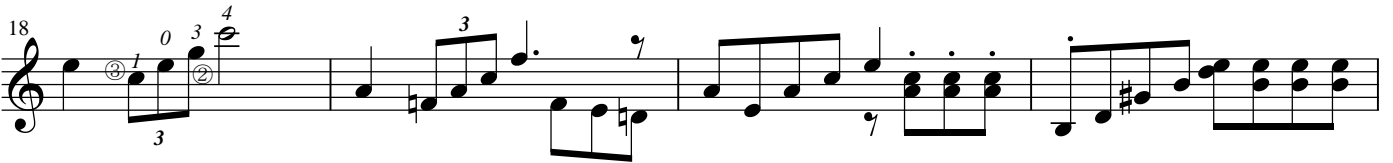
poco rit.



Andante [A]



Allegretto [B]

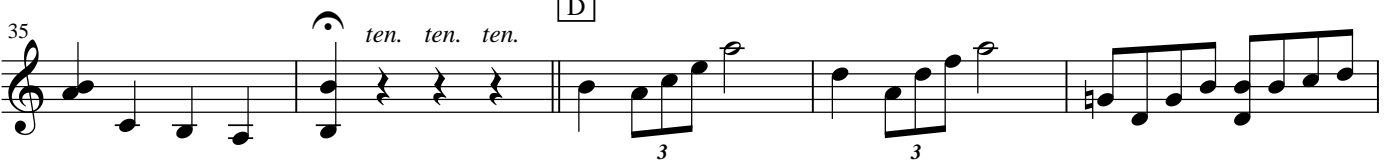


poco rit.

Andante [C]



[D]



40 Musical staff 40-43: Treble clef, key signature of two sharps (F# and C#). Measures 40-43 contain eighth and sixteenth notes with a triplet of eighth notes in measure 42.

44 Musical staff 44-48: Treble clef, key signature of two sharps. Measures 44-48 contain eighth and sixteenth notes with triplets of eighth notes in measures 45, 46, and 48.

49 *rit.* **Andante** [E] Musical staff 49-52: Treble clef, key signature of two sharps. Measure 49 is marked *rit.*. The tempo is **Andante** with a box containing the letter 'E'. Measures 49-52 contain eighth and sixteenth notes with a triplet of eighth notes in measure 52.

53 Musical staff 53-56: Treble clef, key signature of two sharps. Measures 53-56 contain eighth and sixteenth notes with a triplet of eighth notes in measure 54.

57 Musical staff 57-60: Treble clef, key signature of two sharps. Measure 57 has a '2' below the first note. Measures 57-60 contain eighth and sixteenth notes with a fermata over measure 59 and a triplet of eighth notes in measure 60.

61 Musical staff 61-64: Treble clef, key signature of two sharps. Measures 61-64 contain eighth and sixteenth notes with a fermata over measure 63.

65 Musical staff 65-68: Treble clef, key signature of two sharps. Measures 65-68 contain eighth and sixteenth notes with a fermata over measure 67.

69 *accel.* Musical staff 69-72: Treble clef, key signature of two sharps. Measure 69 is marked *accel.*. Measures 69-72 contain eighth and sixteenth notes with a fermata over measure 71.

73 **Allegro** Musical staff 73-76: Treble clef, key signature of two sharps. The tempo is **Allegro**. Measures 73-76 contain eighth and sixteenth notes with a fermata over measure 75.

77 Musical staff 77: Treble clef, key signature of two sharps. Measure 77 contains eighth and sixteenth notes with fingerings 2, 3, 2, 3, #1, 2 above the notes and a circled '2' below the staff.